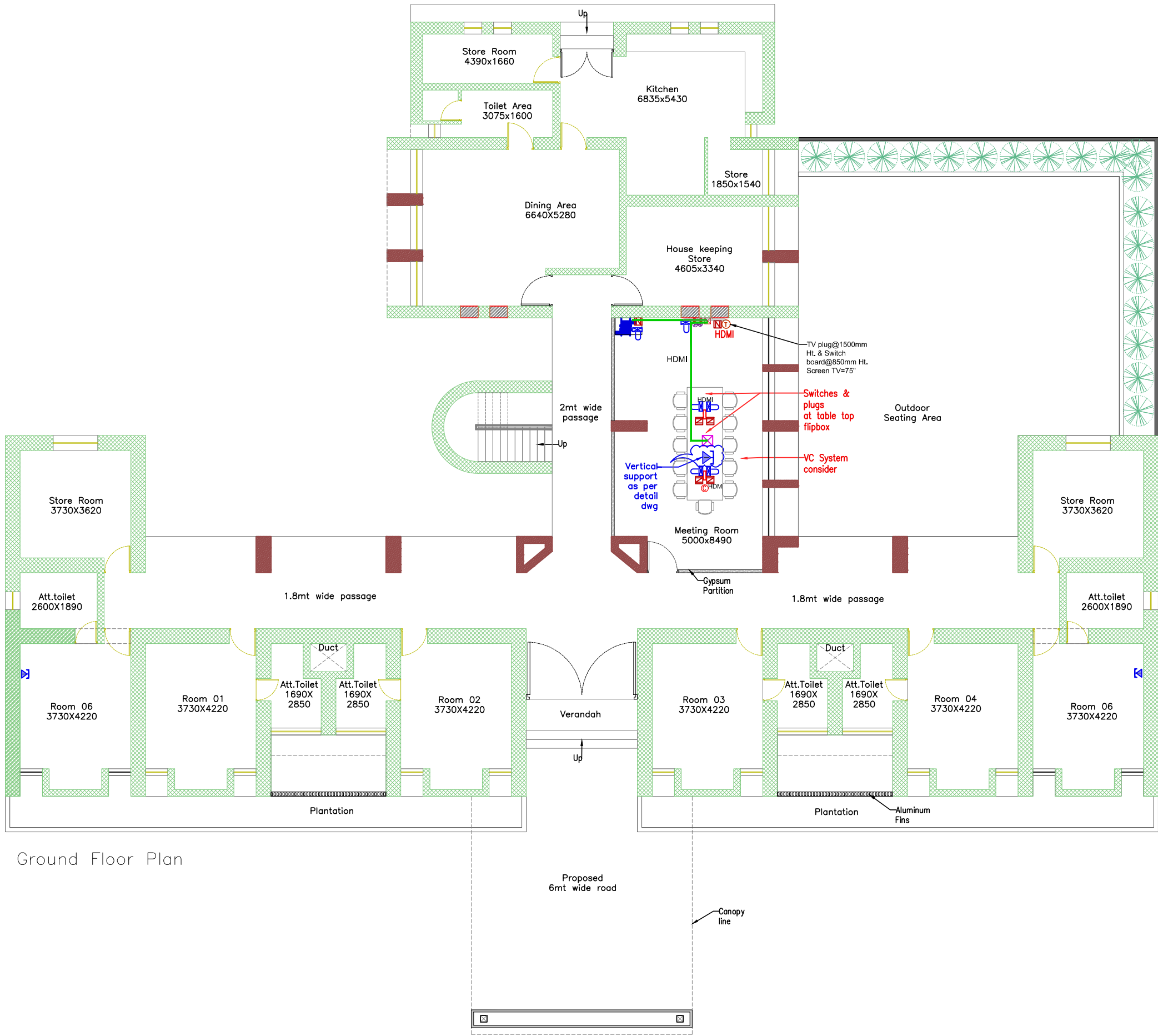


PLOTTED BY: Khyati M. Parikh
LAST SAVED BY: kparikh 19/5/25 1:17 PM
This drawing is property of Mamta Shah & Associates. Without our prior consent, it must be neither copied nor made available to third parties for the purpose other than for which it is meant.



Ground Floor Plan

RACEWAY LEGEND SHEET	
SYMBOL	DESCRIPTION
	200 x 200 MM WIDE & 50 MM DEEP JUNCTION BOX
	350 x 350 MM WIDE & 50 MM DEEP JUNCTION BOX
	150 MM WIDE & 38 MM THREE COMPARTMENT RACEWAY

Legend for Electrical	
Symbol	DESCRIPTION
	Wall mounted lighting
	UPS Power Supply 2 nos.- 6 amp plug for (PC & Monitor)
	Network for Server
	Switch board bottom @ mentioned heights
	5 - AMP Plug point
	15 - AMP Plug point
	TV Cable
	Call Bell Switch
	Flip up box For table top

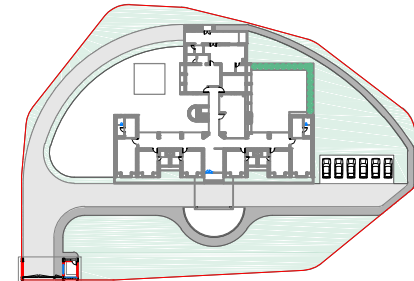
TC Legend	
Symbol	Description
	Intercom Telephone
	Distribution board (T.P.)
	Rack

General Notes :

Legends for hatch	
	Existing Brick wall masonry
	Proposed Brick wall masonry
	Existing RCC Structure

R2	19-05-25	Softcopy	Contractor		Tender	KAP
R1	24-02-25	Softcopy	Contractor		Tender	KAP
R0	07-11-23	Softcopy	Contractor		Tender	KAP
Rev	Date	Issued	Issued to		Issued for	Author

Key Plan:



Project: GMDC Township Development			
Drawing: Telecommunication Layout_ Ground Floor VIP Guest House Sheet 02			
Drawing Code: 2310_INT_TD_GHB_FLC_R2			
Print Size: A2		Scale: 1:100	
File Title: 2310_INT_TD_GHB_FLC_R2			
Project Code: MSA 2310	Project Type: Arc & Int	Location: Ambaji	
Print Date	Drawn By	Checked By	Approved By
19-May-25	K Parikh	K Patel	M Shah

	MAMTA SHAH & ASSOCIATES		
	Architects & Interior Designers		
	C-12, Chanakyapuri Society, Chanakyapuri, Cher Rasta, New Sarna Road, Baroda		
	Ph. No. +91 985 2712267 / 2710967 mamta@msain.com / www.msain.com		

Client:	Gujarat Mineral Development Corporation
---------	---

